

## Specifications



### FEATURES

Netcom's 5900 is a digitally tunable filter covering the frequency range of 225 to 450MHz.

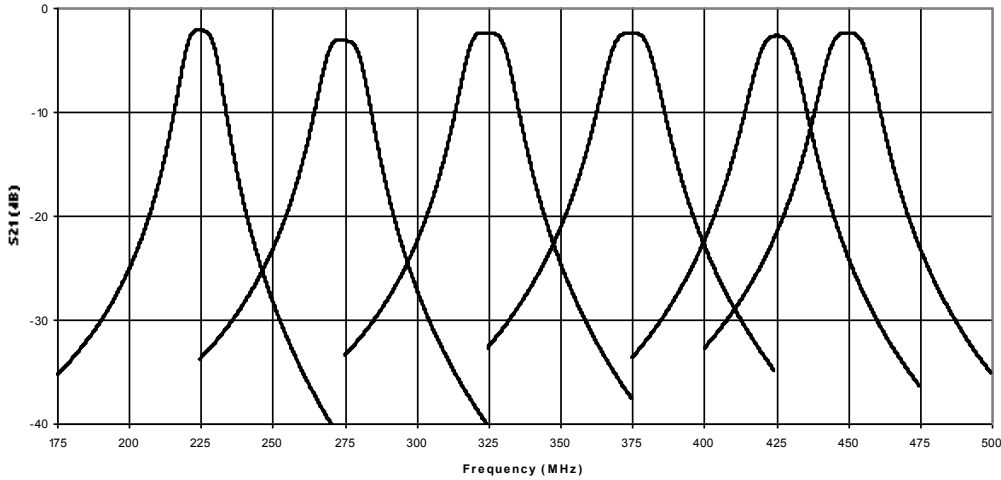
The filter design is based on cavity resonators and includes an integrated digital control interface. With its unique design, it offers a high-power and low insertion loss performance in a small package. It has been designed specifically for higher order modulation systems and data applications having a constant 14MHz filter bandwidth over the entire frequency range. The digital control interface is provided to accept either parallel data and strobe or serial data, clock and strobe.

Options are available upon request for different bandwidth, insertion loss and frequency range.

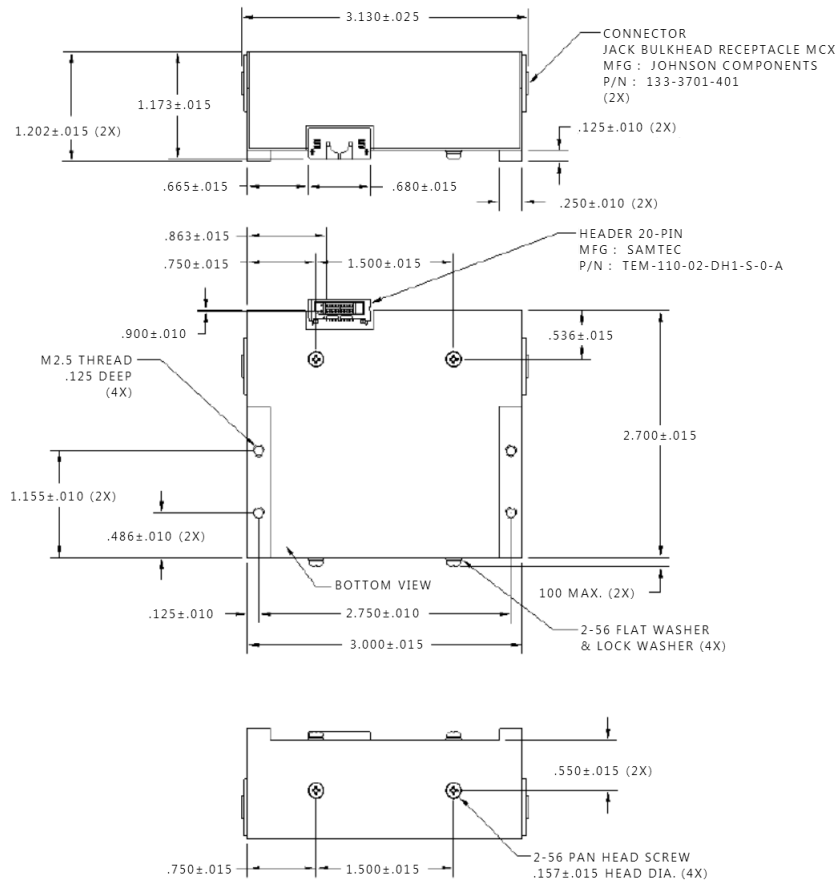
	Min	Nominal	Max
Frequency Range	225Mhz		450MHz
Tuning Channels	250		
Tuning Speed, 90% RF Power	50 $\mu$ S		
Input / Output Impedance	50 $\Omega$		
Input RF Power	10 W		
Filter Bandwidth	14 MHz		
Out of Band Rejection	$f_0 \pm 0$ dB $f_0 \pm 12.6$ MHz > 6dB $f_0 \pm 27.4$ MHz > 16dB $f_0 \pm 71$ MHz > 31dB		
Insertion Loss	2.0 dB	2.33 dB	4.0 dB
VSWR	1.7:1		
Inband Third Order Intercept Point	+50 dBm		
Second Harmonic Rejection	55 dB		
DC Inputs			
+5 Volts			500 mA
+200 Volts			12 mA
Operating Temperature Range	-40 to +85°C		
RF Connectors	MCX		
Control Interface	- 8 bit Parallel or Serial, 20-pin Connector TTL and CMOS Compatible		
Power Save Mode	Programmable		
Dimensions	2.7 x 3.0 x 1.2 inches		

# Performance

Ftune 225-450MHz



# Mechanical



NOTES:  
1. DIMENSIONS ARE IN INCHES.

**NETCOM**  
RF & MICROWAVE TECHNOLOGY

599 Wheeling Road  
Wheeling, IL 60090  
USA  
Phone 847.537.6300  
Fax 847.537.2700  
[www.netcominc.com](http://www.netcominc.com)